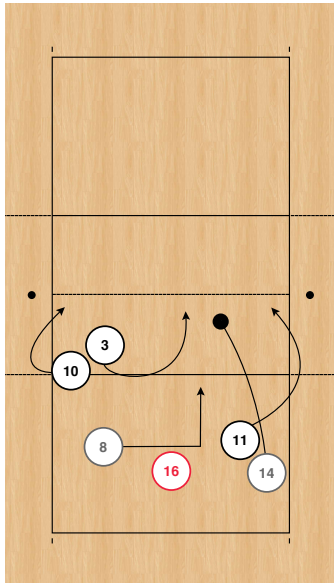


# RIO VOLLEYBALL

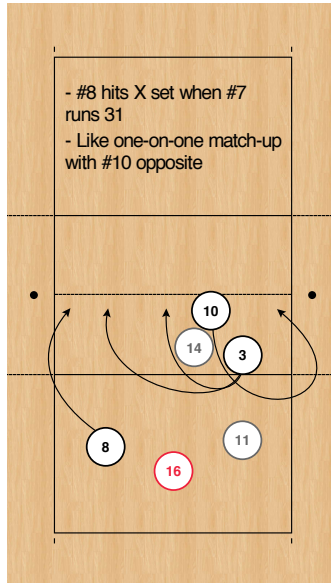
# NETHERLANDS



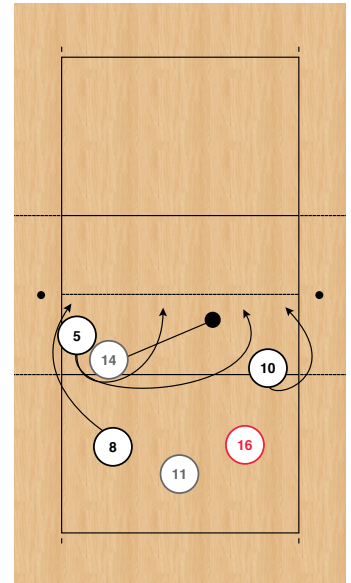
Rotation 1



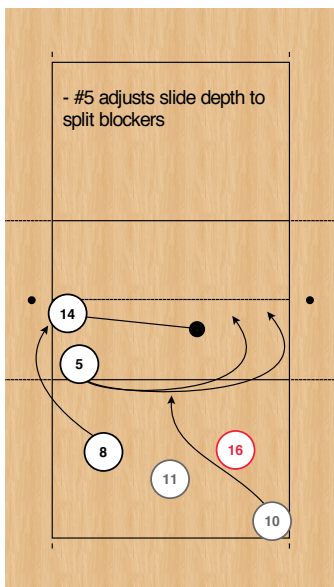
Rotation 2



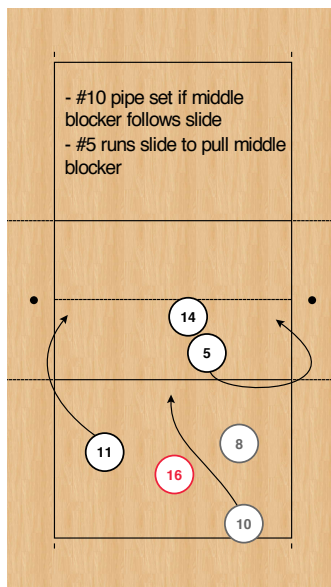
Rotation 3



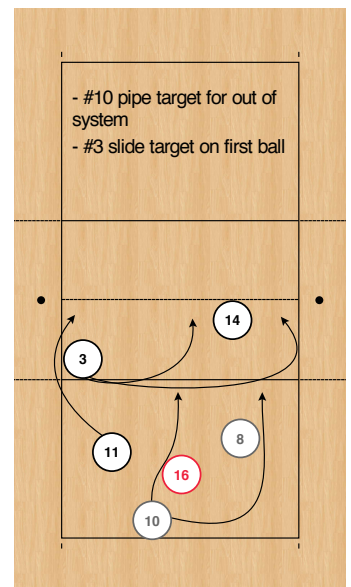
Rotation 4



Rotation 5



Rotation 6



**Notes:**

- #10 most common target in front (back row attack out of RB, MB, LB)
- #5 hits slide hard angle
- #6 left-handed
- #11 hits over block in front row, dangerous during transition from back row 20:10-20:15(20:22-20:25)
- Great blocking team